

St Mary's CE High School

ST MARY'S SIXTH FORM & LEADERSHIP CENTRE

COURSE & APPLICATION GUIDE SEPTEMBER 2024

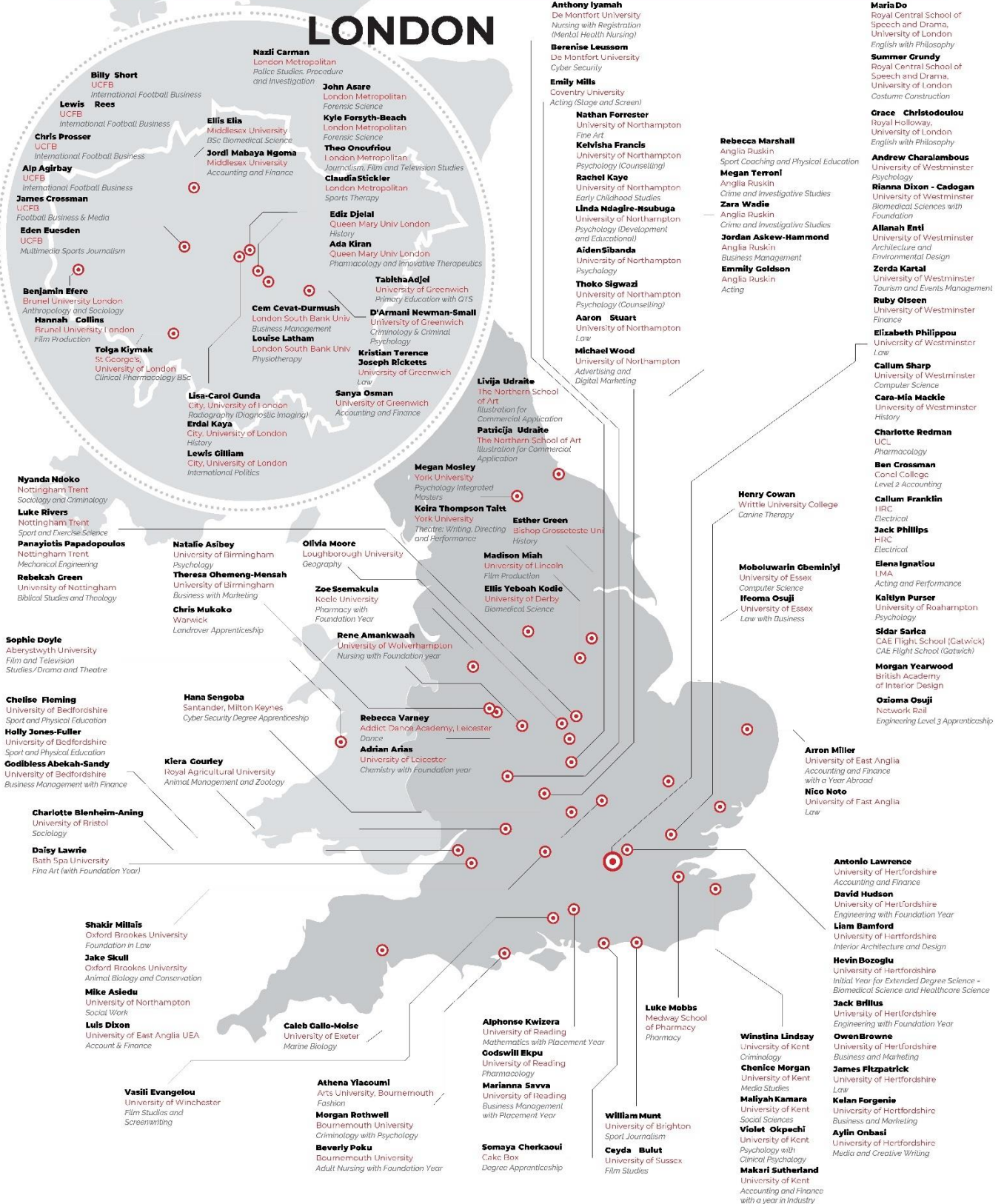


University Destinations for SMHS Students 2022 – 2023



ST MARY'S
CE HIGH SCHOOL

LONDON



Headteacher Welcome

Dear Prospective Sixth Form Student

Thank you for your interest in St Mary's Sixth Form & Leadership Centre. This guide provides information about the courses on offer from September 2024.

We welcome applications from students who have the highest aspirations and a commitment to being the best they can be, regardless of whether they are planning to go to university, into an apprenticeship or into employment. St Mary's has a strong track record of securing first choice destinations (including Cambridge) for our learners as a result of high quality Careers, Education, Information, Advice and Guidance.

St Mary's Sixth Form is very highly respected in the local community for being innovative and inclusive. We have strong links to local and national employers whilst providing different pathways to suit all abilities and interests for learners who wish to pursue study beyond Year 11. Many of our courses and Academy Programmes provide opportunities for students to work with our business and industry partners who offer work placements, employment and apprenticeships to successful students.

Our talented specialist staff work to support students with their personal development and academic achievements. Central to the work of the School is to ensure that students are well supported to develop excellent study habits that allow them to balance their work with a social life and positive personal wellbeing.

The Sixth Form & Leadership Centre Brochure and Course Guide have been designed to provide a comprehensive overview of the ethos of our School, the course pathways offered in our Sixth Form and enrichment that builds on previous learning and unlocks student potential. This means that students who graduate from St Mary's will have an edge over other applicants in this increasingly competitive world. We are very proud that 100% of our students applying for university and apprenticeships have secured places for at least the past eight years and that St Mary's has a higher than national retention rate, with 98% of students staying in education or moving into employment after the Sixth Form.

We value the contribution that our sixth formers make to the leadership of the school, through supporting school events and the Student Council, as well as their contributions to the wider community and we expect students joining St Mary's Sixth Form to continue to support the school in this way, and in doing so, flourishing as young adults themselves.

Please do not hesitate to ask if you have any questions, if you would like to meet with a member of the Sixth Form Leadership Team or if you would like a tour of our facilities.

I look forward to working with you as a senior student of our School.



Nicholas Simms
Head Teacher

Contents

	Page No
Studying in the Sixth Form	5
Student Support	6
Learning Pathways	7
Specific Entry Requirements and Option Blocks.....	8
Level 3 Courses (Academic, Professional & Foundation Pathways)	
GCE A Level Courses	
Art & Design: Fine Art or Photography	11
Art & Design: Textiles Design	11
Biology A	12
Chemistry A	12
Economics	13
English Language	13
English Literature	14
French	14
Further Maths	15
Geography	15
History	16
Law	16
Mathematics	17
Media Studies	17
Physics A	18
Product Design	18
Psychology	19
Religious Studies, Philosophy, Ethics	19
Sociology	20
Spanish	20
Other Level 3 Courses carrying UCAS Points	
Maths in Context	21

Level 3 Vocational Courses

Applied Science	22
Business	22
Health & Social Care	23
Information Technology	23
Sport	24
Food Science & Nutrition	24
Performing Arts	25

The Foundation Pathway – Level 2 26**Level 2 Courses (Mandatory Subjects)**

English Language	27
Mathematics	27

Level 2 Courses

Exploring Enterprise	28
IT Users (ITQ)	28
Sports Industry Skills.....	29
Employment, Teamwork and Community	29

Enrichment Opportunities 30**Careers Education, Advice and Guidance** 32**St Mary's Sports Academy Programmes**

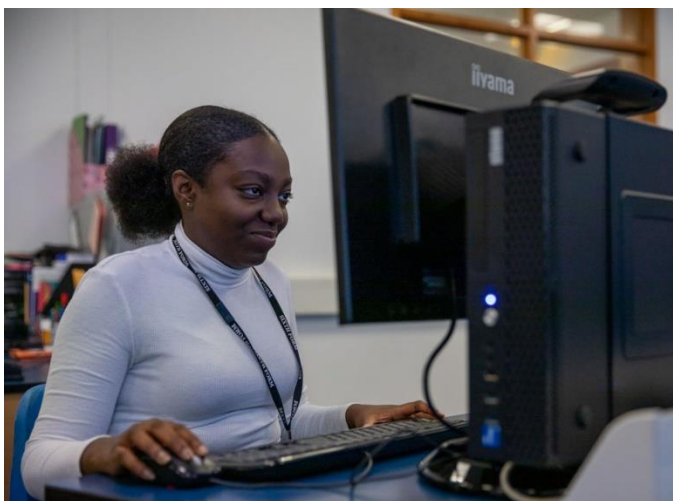
Football Academy	33
Enterprise Academy.....	34

Studying in the Sixth Form

Students studying in Year 12 and 13 will be supported to move on from Key Stage 4 with a personalised curriculum that reflects their career aspirations and prior achievement. Students can study a range of A Level and Vocational courses as part of academic or technical pathways.

The Academic Pathway offers high performing students with the required entry grades, a traditional choice of A Level courses at St Mary's, all of which are delivered by specialist staff. This Pathway is particularly suitable for students who are looking to go to university or to pursue higher level apprenticeships.

The Professional Pathway offers a wide choice of A Level and Applied Technical courses for students who are yet to make decisions about their progression route. Courses chosen within this Pathway ensure that the option of going on to higher education remains open.



The Foundation Pathway is for students who need to strengthen their Level 2 qualifications. Courses are studied for one year and can be combined with Academy programmes and work experience placements. Our courses, if successfully completed, allow students access to interviews, apprenticeships and job opportunities linked to their personal career progression. Students who are successful on this Pathway can choose to progress on to Level 3 courses in the Sixth Form in the following year.

Please see the School [website](#) for more information

Student Support



CARE, GUIDANCE AND SUPPORT

At St Mary's Sixth Form & Leadership Centre we recognise every student as an individual and are committed to ensuring that students are able to thrive as confident, self-motivated, aspirational young adults with a drive and ambition to succeed.

Every student is supported in their transition to Sixth Form study by a comprehensive Induction Programme. A team of specialist Sixth Form tutors use their knowledge and experience to support students daily with their academic progress, personal and social development. Students are also supported by a dedicated Leadership Team and Academic Mentor.

Student progress is tracked through regular reporting, one to one meetings, parent / carer consultations and academic mentoring.

All students also receive extensive, personal advice on careers, university courses, the UCAS entry process including Oxbridge applications.

"The support I have received during my time in the sixth form has been invaluable; helping me to successfully prepare for my next steps" (Sixth Form student)

INDUCTION PROGRAMME

Transition into the Sixth Form is supported by an extensive Induction Programme, focusing on study skills, career progression and Sixth Form expectations and standards.

All students are also expected to prepare for their chosen courses as part of our Induction programme.

TUTOR & MENTORING SUPPORT

All students are placed in a tutor group. Tutors meet daily with students to monitor attendance, progress and well-being and to ensure that students remain on track to achieve or exceed their aspirations.

Tutors also provide information and guidance on courses, careers, support students in job and university applications and maintain regular contact with parents/carers.

Sixth Form students are encouraged to see themselves as positive role models, to set themselves the highest standards and to be aspirational in their outlook. Some students may receive additional mentoring, or pastoral or academic interventions to support them.

A dedicated Sixth Form Academic Mentor monitors and supports student progress.

ENSURING PROGRESS

Every student is expected to achieve or exceed their academic potential. Progress against aspirational targets is tracked by the Sixth Form Team and students and their parents/carers are regularly informed of their progress.

All parents/carers receive an Annual Report and progress is reported termly. There are also frequent opportunities to meet with staff throughout the year at Parent/Carer Consultation Evenings and Subject Surgeries.

Additionally parents/carers are encouraged to support an on-going dialogue with the Form Tutor and Director should they arise

Learning Pathways

The table below summarises the three pathways that are available for Sixth Form students and the courses to which students will have access for each pathway. Please note that reference will be made to the subject specific criteria for each course when confirming course selection.

Academic Pathway	Professional Pathway	Foundation Pathway
<p>Suitable for high achieving students who are looking for professional occupations that require a degree / A levels and a higher level of academic achievement.</p> <p>This would include students considering universities that include the Oxbridge and Russell Group universities as well as Advanced, Higher or Degree Apprenticeships.</p> <p>Students on this pathway will study three or four A level qualifications.</p> <p>Recommended Entry Requirements* *Entry: 8 or more GCSE grades 9-4, including English and Maths at grade 5+</p>	<p>Suitable for students who are looking for professional occupations that may not require a degree but still need a higher level of academic achievement.</p> <p>This would include students considering universities and Advanced, Higher or Degree Apprenticeships. Students on this pathway will study a combination of Level 3 Vocational qualifications and an appropriate A level.</p> <p>Students can also resit GCSE Maths or English on this pathway.</p> <p>Recommended Entry requirements* *Entry: 4-7 GCSE grades 9-4, including English and/or Maths at grade 4+</p>	<p>Suitable for students who are looking to secure their L2 qualifications before moving on to L3 study, Intermediate Apprenticeships or further education.</p> <p>Students on this pathway will study specialist Level 2 qualifications as part of a personalised study programme.</p> <p>Students can also resit GCSE Maths and/or English on this pathway.</p> <p>Recommended Entry requirements* *Entry: At least 1 GCSE/Level 2 qualification at grade 9-4</p>

**Entry requirements always remain at the discretion of the School*

Subject Specific Entry Requirements

A Level Courses	
Art & Design: Fine Art or Photography	Merit or Grade 5 or above in Art and Design at Key Stage 4.
Art & Design: Textiles Design	Grade 5 in GCSE Art or Textile Design based equivalent.
Biology A	2 GCSE Sciences at grade 6 or above. Triple Science must include Biology at grade 6
Chemistry A	2 GCSE Sciences at grade 6 or above. Triple Science must include Chemistry at grade 6. GCSE Maths at a grade 6 or above would be an advantage
Economics	Grade 6 or above in Maths and Grade 5 in English Language or Literature.
English Language	Minimum grade 6 in English Lang or English Lit
English Literature	Minimum grade 6 in English Lang or English Lit
French	Grade 6 in French and English Lang or English Lit
Further Maths	GCSE Higher Tier Maths at grade 8/9. This course can <u>only</u> be studied alongside Mathematics A Level
Geography	Grade 5 in Geography and Maths. Students who have achieved a grade 6 in Geography will be better prepared to meet the course demands
History	Grade 5 in English Lang or English Lit and History
Law	Grade 5 in English Lang or English Lit
Mathematics	GCSE Higher Tier Maths at grade 7 or above
Media Studies	Grade 4 in GCSE English Lang or English Lit
Physics A	Science at grade 7 or above and Maths at a grade 7 or above
Product Design	At least a GCSE grade 5 or L2 Merit or above in Design and Technology or Engineering and a Grade 4 minimum in Maths. Students will also need to have a knowledge or experience of CAD software
Psychology	Grade 6 in Core or Additional Science, or a GCSE grade 6 in Physics, Chemistry or Biology. Students also need to have achieved a grade 6 in Maths
Religious Studies, Philosophy, Ethics	Grade 5 in RS and English Lang or Lit. Students who have achieved a grade 6 in Religious Studies will be better prepared to meet the course demands
Sociology	Grade 5 in English Lang or English Lit
Spanish	Grade 6 in English Lang or English Lit and Grade 6 in GCSE Spanish
Textiles	Grade 5/M2 in GCSE Textile Design or Art
Other Level 3 Courses carrying UCAS Points	
Maths in Context	Grade 5 in English Lang or Lit and Maths
Level 3 Vocational Courses	
Applied Science	Grade 4 Science. Students with a grade 5 in Science will be better prepared to meet the demands of the course.
Business	Extended Certificate (Single Award): Business Studies or ICT GCSE/L2 at P2/grade 4. Diploma (Double Award): Business Studies or ICT GCSE/L2 at M2/grade 5
Health & Social Care	L2 Health & Social Care grade Merit
Information Technology	Extended Certificate (Single Award): ICT at GCSE/L2 at P2/grade 4 Diploma (Double Award): ICT GCSE /L2 at M2/grade 5
Sport	PE/Sports Studies/ Sports Science GCSE/L2 BTEC/L2 CTEC at P2/grade
Food Science & Nutrition	Certificate: L2 Hospitality and Catering or GCSE Food Preparation and Nutrition graded P2/Grade 4 Diploma: L2 Hospitality and Catering or GCSE Food Preparation and Nutrition graded M2/Grade 5
Performing Arts	Grade 4 in English Lang or Lit. Grade 4/P2 in Drama or Music

**entry requirements remain at the discretion of the School*

Level 3 Option Blocks – September 2023

Guidance Notes

-Students are required to select 3 qualifications from 3 separate blocks A-E.

-Sport, Info Technology and Business can be selected as a 'single' (1 choice) or 'double' (2 choices) qualification

	Block A	Block B	Block C	Block D	Block E
AS/A Level Qualifications	Biology Further Maths Textiles Design Law	Chemistry Religious Studies, Philosophy, Ethics Product Design Sociology Media Studies	Physics French Spanish History Fine Art or Photography	Maths Maths in Context Sociology Geography	Psychology English Literature English Language Economics
Level 3 Vocational Qualifications	Info Technology Single	Health & Social Care Single Sport Double	Applied Science Single Business Single	Sport Single Performing Arts Single	Food Science & Nutrition Single Business Double Info Technology Double

Please note:

- A Pearson BTEC Extended Certificate is the equivalent of a single A Level
- A Pearson BTEC National Diploma is the equivalent of two A Levels
- A WJEC Diploma is the equivalent of a single A Level

How to Apply

To apply for a place at St Mary's Sixth Form and Leadership Centre complete an online application form at the following location:

<https://forms.office.com/e/5mYZhWtvVy>



Alternatively, scan the following QR code using your smartphone

The deadline for applications to be received by the School is : 8th December 2023

COURSE INFORMATION

GCE A Level Courses

Art & Design: Fine Art or Photography

Pearson Edexcel

GCE A LEVEL (2 Years)

STUDENTS WILL NEED

Students will need to achieve recommended entry requirements for the Professional Pathway, plus subject specific requirements of:

Level 2 Art & Design at grade M2/grade 5 or above

STUDENTS WILL STUDY

Students will develop their own individual approach to visual arts; refining and improving their ability to use the key skills of drawing, painting, printmaking, sculpture and digital media.

The course includes many enriching activities such as workshops, off-site life drawing classes and visits to London galleries.

ASSESSMENT

A Level assessment is made up of two components:

Component 1: Personal portfolio (60% of total marks)

Component 2: Externally set assignment (40% of total marks)

POTENTIAL SECTORS OF EMPLOYMENT

Arts, Media and Publishing

Education and Training

Health, Public Services and Care

Engineering and Manufacturing Technology

Construction, Planning and the Built Environment

Art & Design: Textiles Design AQA

GCE A LEVEL (2 Years)

STUDENTS WILL NEED

Students will need to achieve recommended entry requirements for Academic or Professional pathway, plus subject specific requirements of:

Grade 5 in GCSE Textile Design or Art based equivalent.

STUDENTS WILL STUDY

Students will explore a range of textile media, processes and techniques in response to a range of traditional and modern images, resources and artefacts.

Students must choose to work in one or more of the following textiles areas:

- Fashion design
- Fashion textiles
- Costume design
- Printed and/or dyed fabric and materials
- Interior design
- Constructed textiles
- Art textiles

ASSESSMENT

Students will complete the following modules:

Component 1 (60%): portfolio of work where students will work through contextual challenges, exploring a range of appropriate techniques to develop a final piece

Component 2 (40%): students are set an assignment by the exam board which they need to respond to and develop a final piece.

POTENTIAL SECTORS OF EMPLOYMENT

Arts, Media and Publishing

Retail and Commercial Enterprise

Education and Training

Engineering and Manufacturing Technology

GCE A Level Courses

Biology A

OCR

GCE A LEVEL (2 Years)

STUDENTS WILL NEED

Students will need to achieve recommended entry requirements for Academic pathway, plus subject specific requirements of:

Two GCSE Sciences at grade 6 or above. Triple Science must include Biology at grade 6.

STUDENTS WILL STUDY

Module 1: Development of practical skills

Module 2: Foundations in biology

Module 3: Exchange and transport

Module 4: Biodiversity, evolution and disease

Module 5: Communication, homeostasis and energy

Module 6: Genetics, evolution and ecosystems

ASSESSMENT

Students are assessed using three written examinations:

Paper 1: Biological Processes (37%)

Paper 2: Biological Diversity (37%)

Paper 3: Unified Biology (26%)

There is also an A Level practical endorsement (Reported separately)

POTENTIAL SECTORS OF EMPLOYMENT

Health, Public Services and Care

Science and Mathematics

Agriculture, Horticulture and Animal Care

Chemistry A

OCR

GCE A LEVEL (2 Years)

STUDENTS WILL NEED

Students will need to achieve recommended entry requirements for Academic pathway, plus subject specific requirements of:

Two GCSE Sciences at grade 6 or above. Triple Science must include Chemistry at grade 6. GCSE Maths at a grade 6 or above would be an advantage.

STUDENTS WILL STUDY

Module 1: Development of practical Skills

Module 2: Foundations in chemistry

Module 3: Periodic table and energy

Module 4: Core organic chemistry

Module 5: Physical chemistry and transition elements

Module 6: Organic Chemistry & analysis

ASSESSMENT

Students are assessed using three written examinations:

Paper 1: Periodic table, elements and physical Chemistry (37%)

Paper 2: Synthesis and analytical techniques (37%)

Paper 3: Unified Chemistry (26%)

A Level practical endorsement (Reported separately)

POTENTIAL SECTORS OF EMPLOYMENT

Health, Public Services and Care

Science and Mathematics

Agriculture, Horticulture and Animal Care

GCE A Level Courses

Economics

AQA

GCE A LEVEL (2 Years)

STUDENTS WILL NEED

Students will need to achieve recommended entry requirements for the Academic Pathway, including the subject specific requirements of:
Grade 6 in GCSE Maths and a Grade 5 in English Language or English Literature.

STUDENTS WILL STUDY

Unit 1: Markets and market failure
Unit 2: National and international economy
Unit 3: Economic and principles and issues

ASSESSMENT

Students are assessed using three written examinations

Unit 1(33.3%): written examination

Section A: data response

Section B: essay question

Unit 2 (33.3%): written examination

Section A: data response

Section B: essay question

Unit 3 (33.3%): written examination

Section A: multiple choice marks

Section B: case study

POTENTIAL SECTORS OF EMPLOYMENT

Business, Administration and Law

Preparation for Life and Work

Arts, Media and Publishing

Information and Communication Technology

Retail and Commercial Enterprise

Leisure, Travel and Tourism

English Language

AQA

GCE A LEVEL (2 Years)

STUDENTS WILL NEED

Students will need to achieve recommended entry requirements for Academic or Professional pathway, plus subject specific requirements of:
Minimum grade 6 in English Language or Literature.
Students should enjoy reading and investigating language and how it is used

STUDENTS WILL STUDY

Paper 1 : Language, the individual and society

Paper 2 : Language, diversity and change

ASSESSMENT

Students are assessed using two written examinations plus coursework

Component 1: Written Examination (40%)

Component 2: Written Examination (40%)

Component 3: Non exam assessment (coursework investigation) Language in Action (20%)

POTENTIAL SECTORS OF EMPLOYMENT

Languages, Literature and Culture

Education and Training

Arts, Media and Publishing

Business, Administration and Law

GCE A Level Courses

English Literature

OCR

GCE A LEVEL (2 Years)

STUDENTS WILL NEED

Students will need to achieve recommended entry requirements for Academic or Professional pathway, plus subject specific requirements of:

Minimum grade 6 in English Literature or Language.

Students should enjoy reading and be prepared to study a variety of challenging texts

STUDENTS WILL STUDY

Component 1: Drama and poetry pre-1900 (includes a Shakespeare play)

Component 2: Comparative study of chosen topic area (Gothic)

Component 3: Literature post 1900

ASSESSMENT

Students are assessed using two written examinations plus coursework

Component 1: Written examination - Shakespeare, Drama and Poetry Pre 1900 (40%)

Component 2: Comparative and contextual study of chosen topic area (Gothic) (40%)

Component 3: non-examined assessment (coursework) - Post 1900 texts including one prose text, one poetry text and one drama text (20%)

POTENTIAL SECTORS OF EMPLOYMENT

Languages, Literature and Culture

Education and Training

Arts, Media and Publishing

Business, Administration and Law

French

Pearson Edexcel

GCE A LEVEL (2 Years)

STUDENTS WILL NEED

Students will need to achieve recommended entry requirements for Academic or Professional pathway, plus subject specific requirements of:

Grade 6 in English Language or English Literature, plus grade 6 in GCSE French.

STUDENTS WILL STUDY

Theme 1: Les changements dans la société française

Theme 2: La culture politique et artistique dans les pays francophones

Theme 3: L'immigration et la société multiculturelle française

Theme 4: L'Occupation et la Résistance

ASSESSMENT

Students are assessed using two written examinations and a speaking examination

Paper 1: Listening, reading and translation (40%)

Paper 2: Written response to works and translation (30%)

Paper 3: Speaking (30%)

POTENTIAL SECTORS OF EMPLOYMENT

Leisure, Travel and Tourism

Education and Training

Arts, Media and Publishing,

Languages, Literature and Culture

Business, Administration and Law

GCE A Level Courses

Further Maths Pearson Edexcel

GCE A LEVEL (2 Years)

STUDENTS WILL NEED

Students will need to achieve recommended entry requirements for Academic or Professional pathway, plus subject specific requirements of:

GCSE Higher Tier Maths at grade 8/9. This course can only be studied alongside Mathematics A Level.

This course is aimed at students who are expecting to attend university and follow a course with a high mathematical content for example Mathematics, Science, Computing, Engineering or Economics.

STUDENTS WILL STUDY

A variety of topics will be covered including proof, complex numbers, matrices, further algebra and functions, further calculus and further vectors

ASSESSMENT

Students are assessed using four written examinations

Paper 1: Core Pure Mathematics 1 (25%)

Paper 2: Core Pure Mathematics 2 (25%)

Paper 3: Further Mathematics Option 1 (25%)

Paper 4: Further Mathematics Option 2 (25%)

Option 1 to be chosen from Further Pure Mathematics 3, Further Statistics 1, Further Mechanics 1, Decision Mathematics 1.

Option 2 to be chosen from Further Pure Mathematics 4, Further Statistics 1 (*), Further Statistics 2, Further Mechanics 1 (*), Further Mechanics 2, Decision Mathematics 1 (*), Decision Mathematics 2.

(*) Note – these options can only be taken **once** so students must do two unique options.

POTENTIAL SECTORS OF EMPLOYMENT

Science and Mathematics Health

Public Services and Care

Engineering and Manufacturing technologies

Information and Communication technologies

Construction, Planning and the Built Environment

Education and Training

Geography Pearson Edexcel

GCE A LEVEL (2 Years)

STUDENTS WILL NEED

Students will need to achieve recommended entry requirements for the Academic pathway, plus subject specific requirements of:

Grade 5 in GCSE Geography and GCSE Maths. Students who have achieved a grade 6 in Geography will be better prepared to meet the course demands.

STUDENTS WILL STUDY

Unit 1: Dynamic Landscapes - Tectonic Processes and Hazards/Coastal Landscape Systems, Processes and Change /The Water Cycle and Water Insecurity/The Carbon Cycle and Energy Security

Unit 2: Dynamic Places – Globalisation/ Shaping Places – Regenerating places/Superpowers/Migration Identity and Sovereignty

Unit 3: Synoptic Themes - assessment of geographical skills, knowledge and understanding within a place based context linking players, attitudes and actions, and futures and uncertainties.

Unit 4: Independent Investigation

ASSESSMENT

Students are assessed using three written examinations (Unit 1-3) and one non-examined assessment (Unit 4)

Paper 1, Written Exam, 2hrs 15 mins (30%)

Paper 2, Written Exam, 2hrs 15mins (30%)

Paper 3, Written Synoptic Exam, 2hrs 15 mins (20%)

Non-Examined Assessment: Independent Investigation (20%)

There is compulsory fieldwork to complete this course.

POTENTIAL SECTORS OF EMPLOYMENT

Agriculture, Horticulture and Animal Care

Construction, Planning and Built Environment

Education and Training

Leisure, Travel and Tourism, Social Sciences

Business, Administration and Law

Engineering and Manufacturing Technologies

GCE A Level Courses

History

AQA

GCE A LEVEL (2 Years)

STUDENTS WILL NEED

Students will need to achieve recommended entry requirements for Academic or Professional pathway, plus subject specific requirements of:

Grade 5 in English Language or Literature and GCSE History. Students who have achieved a grade 6 in History will be better prepared to meet the course demands.

STUDENTS WILL STUDY

Component 1: Breadth of Study – The Stuarts, Britain and the Crisis of the Monarchy 1603-1702

Component 2: Democracy and Nazism; Germany 1918 – 1945

Component 3: Historical Investigation, focussing on 100 years of history and historians interpretation of why key changes have taken place

Students must refer to a wide range of historians in their coursework by reading widely. They will also need to identify contemporary sources to include in their analysis work.

ASSESSMENT

Students are assessed using two written examinations plus coursework

Component 1: Written examination (40%)

Component 2: Written examination (40%)

Component 3: Coursework (20%)

POTENTIAL SECTORS OF EMPLOYMENT

Social Sciences

Arts, Media and Publishing

Education and Training

History, Philosophy and Theology

Business, Administration and Law

Health, Public Services and Care

Arts, Media and Publishing

Law

AQA

GCE A LEVEL (2 Years)

STUDENTS WILL NEED

Students will need to achieve recommended entry requirements for Academic or Professional pathway, plus subject specific requirements of:

Grade 5 in English Language or English Literature.

STUDENTS WILL STUDY

The Nature of Law and the English Legal System

ASSESSMENT

Students are assessed using three written examinations

Paper 1: Criminal Law (33%)

Paper 2: Tort Law (33%)

Paper 3: Human Rights (33%)

POTENTIAL SECTORS OF EMPLOYMENT

Business, Administration and Law

Social Sciences

Education and Training

Health, Public Services and Care

GCE A Level Courses

Mathematics

Pearson Edexcel

GCE A LEVEL (2 Years)

STUDENTS WILL NEED

Students will need to achieve recommended entry requirements for Academic or Professional pathway, plus subject specific requirements of:
GCSE Higher Tier Maths at grade 7 or above.

STUDENTS WILL STUDY

Pure Mathematics, Statistics, Mechanics. Topics include proof, algebra and functions, coordinate geometry, sequences and series, trigonometry, exponentials and logarithms, calculus, vectors, numerical methods.

ASSESSMENT

Students are assessed using three written examinations.

Students can use a calculator for all exams.

Paper 1: Pure Mathematics 1 (33⅓%)

Paper 2: Pure Mathematics 2 (33⅓%)

Paper 3: Statistics and Mechanics (33⅓%)

All papers are compulsory.

POTENTIAL SECTORS OF EMPLOYMENT

Science and Mathematics Health

Public Services and Care

Engineering and Manufacturing technologies

Information and Communication technologies

Construction, Planning and the Built Environment

Education and Training

Media Studies

OCR

GCE A LEVEL (2 Years)

STUDENTS WILL NEED

Students will need to achieve recommended entry requirements for Academic or Professional pathway, plus subject specific requirements of:
Grade 4 in English Language or English Literature.
Students with a Grade 5 in English and a Grade 5 or above in another literacy based course will be well placed to succeed

STUDENTS WILL STUDY

Component 1: Media Messages: News, magazines, advertising and marketing and music videos

Component 2: Evolving Media: Long form TV Drama, film, computer games, radio

Component 3: NEA- Learners will create a cross-media product in response to an OCR set brief.

ASSESSMENT

Unit one. 2 hour exam. 70 marks. 35% of overall course

Unit two. 2 hour exam. 70 marks. 35% of overall course

NEA. (non-exam assessment) 30 % of overall course

POTENTIAL SECTORS OF EMPLOYMENT

Arts, Media and Publishing

Business, Administration and law

Information and Communication Technology

Languages, Literature and Culture

GCE A Level Courses

Physics A

OCR

GCE A LEVEL (2 Years)

STUDENTS WILL NEED

Students will need to achieve recommended entry requirements for Academic Pathway, plus subject specific requirements of:
Science and Maths at grade 7 or above.

STUDENTS WILL STUDY

Module 1: Development of Practical Skills in Physics
Module 2: Foundations of Physics
Module 3: Forces and Motion
Module 4: Electrons, Waves and Photons
Module 5: Newtonian World and Astrophysics
Module 6: Particles and Medical Physics

ASSESSMENT

Students are assessed using three written examinations plus practical work
Modelling Physics: Written Examination (37%)
Exploring Physics: Written Examination (37%)
Unified Physics: Written Examination (26%)
Plus Practical Endorsement in Physics

POTENTIAL SECTORS OF EMPLOYMENT

Science and Mathematics
Construction, Planning and the Built Environment
Education and Training

Product Design

AQA

GCE A LEVEL (2 Years)

STUDENTS WILL NEED

Students will need to achieve recommended entry requirements for Academic or Professional Pathway, plus subject specific requirements of:
At least a grade 5 or L2 Merit in Design and Technology or Engineering and at least a grade 4 in GCSE Maths

STUDENTS WILL STUDY

- Technical Principles through a range of design and manufacture activities
- Designing and making principles where students will develop a portfolio of work

ASSESSMENT

Students are assessed using two written examinations plus practical work
Paper 1: Core technical principles and core designing and making principles (25%)
Paper 2: Specialist knowledge (25%)
(B) Non Exam Unit : Substantial Design and Making Practice (50%)

POTENTIAL SECTORS OF EMPLOYMENT

Engineering and Manufacturing Technologies
Construction, Planning and the Built Environment
Education and Training

GCE A Level Courses

Psychology

AQA

GCE A LEVEL (2 Years)

STUDENTS WILL NEED

Students will need to achieve recommended entry requirements for Academic or Professional pathway, plus subject specific requirements of:

Grade 6 in Core or Additional Science, or a GCSE grade 6 in Physics, Chemistry or Biology. Students will also need to have achieved a grade 6 in Maths.

STUDENTS WILL STUDY

Content 1: Social Influence

Content 2: Memory

Content 3: Attachment

Content 4: Approaches in Psychology

Content 5: Psychopathology

Content 6: Biopsychology

Content 7: Research Methods

Content 8: Issues and Debates in Psychology

Plus a further optional unit that covers topics such as, Relationships, Gender, Cognition and Development, Schizophrenia, Eating Behaviour, Stress, Aggression, Forensic Psychology and Addiction

ASSESSMENT

Students are assessed using three written examinations

Paper 1: Introductory Topics in Psychology (33.3%)

Paper 2: Psychology in Context (33.3%)

Paper 3: Issues and Options in Psychology (33.3%)

POTENTIAL SECTORS OF EMPLOYMENT

Health, Public Services and Care

Education and Training

Arts, Media and Publishing

Religious Studies, Philosophy, Ethics and Development within Christian Thought

OCR

GCE A LEVEL (2 Years)

STUDENTS WILL NEED

Students will need to achieve recommended entry requirements for Academic or Professional pathway, plus subject specific requirements of:

Grade 5 in RS and English Language or Literature. Students who have achieved a grade 6 in Religious Studies will be better prepared to meet the course demands.

STUDENTS WILL STUDY

Religious Studies (Philosophy & Ethics) is a thought provoking subject that analyses the nature of reality. Philosophy literally means a love of wisdom and is a quest for truth and knowledge, an ability to distinguish between doxa (opinion) and episteme (knowledge). It examines the three R's; what is Real (metaphysics), what is Right (ethics) and what is Rational and reasonable belief. The subject is highly respected by universities because it develops key skills of analysis and enquiry which are transferrable across many subjects.

Unit 1: Philosophy of religion

Unit 2: Religion and ethics

Unit 3: Developments in religious thought

ASSESSMENT

Students are assessed using three written examinations, each worth 33.3%

POTENTIAL SECTORS OF EMPLOYMENT

Education and Training

Business, Administration and Law

Health, Public Services and Care

Arts, Media and Publishing

Social Sciences

GCE A Level Courses

Sociology

AQA

GCE A LEVEL (2 Years)

STUDENTS WILL NEED

Students will need to achieve recommended entry requirements for Academic or Professional pathway, plus subject specific requirements of:
Grade 5 in English Language or Literature.

STUDENTS WILL STUDY

Families and households
Education and sociological research methods
Mass Media
Crime and deviance with theory and methods;
stratification and differentiation, sociological theories and methods

ASSESSMENT

Students are assessed using three written examinations
Paper 1: Education with theory and methods
Paper 2: Families, households and mass media
Paper 3: Crime and deviance with theory and methods

POTENTIAL SECTORS OF EMPLOYMENT

Social Sciences
Health, Public Services and Care
Arts, Media and Publishing
Education and Training
Business, Administration and Law
Retail and Commercial Enterprise

Spanish

Pearson Edexcel

GCE A LEVEL (2 Years)

STUDENTS WILL NEED

Students will need to achieve recommended entry requirements for Academic or Professional pathway, plus subject specific requirements of:
Grade 6 in English Language or English Literature, plus grade 6 in GCSE Spanish.

STUDENTS WILL STUDY

Theme 1: La evolución de la sociedad española
Theme 2: La cultura política y artística en el mundo de habla española
Theme 3: La inmigración y la sociedad multicultural española
Theme 4: La dictadura franquista y la transición a la democracia

ASSESSMENT

Students are assessed using two written examinations plus a speaking examination
Paper 1: Listening, reading and translation (40%)
Paper 2: Written response to works and translation (30%)
Paper 3: Speaking (30%)

POTENTIAL SECTORS OF EMPLOYMENT

Leisure, Travel and Tourism
Education and Training
Arts, Media and Publishing,
Languages, Literature and Culture
Business, Administration and Law

Other Level 3 Courses Carrying UCAS Points

Maths in Context

Pearson Edexcel

LEVEL 3 CERTIFICATE (1 Year)

STUDENTS WILL NEED

Students will need to achieve recommended entry requirements for the Professional Pathway, plus subject specific requirements of:

Grade 5 in English Language and Maths.

This course is aimed at students who are competent at Mathematics, but have chosen not to study Mathematics. Elements of AS level Mathematics are covered, but not in the same depth as the AS level qualification. This qualification will be of benefit to students who are studying other courses that have significant mathematical content such as Geography or Sciences.

STUDENTS WILL STUDY

There are four content areas for this qualification, and they will be assessed over both examination papers. They are

- Applications of statistics
- Probability
- Linear programming
- Sequences and growth

ASSESSMENT

Students are assessed using two written examinations

Paper 1 (Comprehension) (40%)

Paper 2 (Applications) (60%)

There is no coursework

POTENTIAL SECTORS OF EMPLOYMENT

Science and Mathematics Health

Public Services and Care

Engineering and Manufacturing technologies

Information and Communication technologies

Construction, Planning and the Built Environment

Education and Training

Level 3 Vocational Courses

Applied Science

Pearson Edexcel

BTEC NATIONAL EXTENDED CERTIFICATE (2 Years)

STUDENTS WILL NEED

Students will need to achieve recommended entry requirements for the Professional Pathway, plus subject specific requirements of:
Grade 4 Science.

STUDENTS WILL STUDY

- Principles and Applications of Science
- Practical Scientific Procedures and Techniques
- Science Investigation Skills

Plus one optional unit

ASSESSMENT

The course is assessed through coursework and external assessment by examination.

POTENTIAL SECTORS OF EMPLOYMENT

Health, Public Services and Care
Science and Mathematics
Agriculture, Horticulture and Animal Care

Note: This qualification may be adjusted once DfE information is confirmed.

Business

Pearson Edexcel

BTEC NATIONAL EXTENDED CERTIFICATE (2 Years)
BTEC NATIONAL DIPLOMA (2 Years)

STUDENTS WILL NEED

Students will need to achieve recommended entry requirements for the Professional Pathway, plus subject specific requirements of:

BTEC National Extended Certificate: Business Studies or ICT GCSE/L2 at P2/grade 4

BTEC National Diploma: Business Studies or ICT GCSE/L2 at M2/grade

STUDENTS WILL STUDY

Unit 1: Exploring Business Assignment

Unit 2: Developing a Marketing Campaign Task

Unit 3: Personal & Business Finance

Unit 8: Recruitment and Selection (

If students are studying the National Diploma they will also study a further range of units including Digital Marketing and International Business.

ASSESSMENT

The new BTEC Nationals in Business use a combination of assessment styles to give students confidence so they can apply their knowledge to succeed in the workplace and have the study skills to continue learning throughout their career.

This range of vocational assessments, both practical and written, enable students to showcase their learning and skills to best effect when they take their next step, whether supporting applications to higher education courses or to potential employers. This course includes both internal and external assessment.

POTENTIAL SECTORS OF EMPLOYMENT

Business, Administration and Law

Preparation for Life and Work

Arts, Media and Publishing

Information and Communication Technology

Retail and Commercial Enterprise

Leisure, Travel and Tourism

Level 3 Vocational Courses

Health & Social Care

OCR

Cambridge Technical Extended Certificate (2 Years)

STUDENTS WILL NEED

Students will need to achieve the recommended entry requirements for the Professional Pathway, plus subject specific requirements of: L2/BTEC Health and Social Care Grade Merit

STUDENTS WILL STUDY

The Level 3 Health and Social care course allows students to explore the Healthcare industry, developing a broad understanding of topics that include relationship building, safeguarding, anatomy and physiology and psychology. Specific units include:

Unit 1: Building positive relationships in health and social care

Unit 2: Equality, diversity and rights in health and social care

Unit 3: Health, safety and security in health and social care

Unit 4: Anatomy and physiology for health and social care

Unit 22: Psychology for health and social care

Unit 24: Public health

ASSESSMENT

The Level 3 Diploma in Health and Social Care assessed using a combination of internal and external assessment.

Unit 1: Building positive relationships in health and social care

Unit 2: Equality, diversity and rights in health and social care (exam)

Unit 3: Health, safety and security in health and social care (exam)

Unit 4: Anatomy and physiology for health and social care (exam)

Unit 22: Psychology for health and social care

Unit 24: Public health

POTENTIAL SECTORS OF EMPLOYMENT

Health, Public Services and Care

Social Services

Business, Administration and Law

Education and Training

Information Technology

Pearson Edexcel

BTEC NATIONAL EXTENDED CERTIFICATE (2 Years)

BTEC NATIONAL DIPLOMA (2 Years)

STUDENTS WILL NEED

Students will need to achieve recommended entry requirements for the Professional Pathway, plus subject specific requirements of:

BTEC National Extended Certificate: ICT at P2/Grade 4

BTEC National Diploma: ICT at M2/Grade 5

This qualification is designed for learners who are interested in a basic introduction to the study of information technology alongside other fields of study, with a view to progressing to a wide range of courses.

STUDENTS WILL STUDY

Unit 1 Information Technology Systems

Unit 2 Creating Systems to Manage information

Unit 3 Using social media in Business

Unit 6 Website Development

If students are studying the National Diploma they will also study a further range of units including Unit 8 Games Development and Unit 4 Programming.

ASSESSMENT

The new BTEC Nationals in ICT use a combination of assessment styles to give students confidence so they can apply their knowledge to succeed in the workplace and have the study skills to continue learning throughout their career.

This range of vocational assessments, both practical and written, enable students to showcase their learning and skills to best effect when they take their next step, whether that's supporting applications to higher education courses or to potential employers. This course includes both internal and external assessment.

POTENTIAL SECTORS OF EMPLOYMENT

Information and Communication Technology

Retail and Commercial Enterprise

Education and Training

Engineering and Manufacturing Technologies

Level 3 Vocational Courses

Sport

Pearson Edexcel

BTEC NATIONAL EXTENDED CERTIFICATE (2 Years)

BTEC NATIONAL DIPLOMA (2 Years)

STUDENTS WILL NEED

Students will need to achieve recommended entry requirements for the Professional Pathway, plus subject specific requirements of:

PE/Sports Studies/ Sports Science GCSE/L2 BTEC/L2 CTEC at P2/grade 4

STUDENTS WILL STUDY

Mandatory Units

Anatomy and Physiology

Fitness Training & Programming for Health, Sport & Well-being

Professional Development in the Sports Industry

Application of Fitness Testing and Training

Specialist Units

Sports Psychology

Technical and Tactical Awareness

The Athletes Lifestyle

Sports Performance and Profiling

Coaching for Sports Performance

One Optional Unit to be taught

ASSESSMENT

A series of assignments to be completed by students that are set in a work-related scenario that will be marked internally. Tasks will also form part of the assessment procedure and will be completed in controlled conditions. Unit 2- Fitness Training & Programming for Health, Sport & Well-being

Pre-release task: Students will interpret lifestyle factors and health screening data in order to create and justify a fitness training programme based on these interpretations.

Unit 1 Anatomy and Physiology written exam

POTENTIAL SECTORS OF EMPLOYMENT

Education and Training; Retail and Commercial Enterprise

Leisure, Training and Tourism

Preparation for Life and Work

Food Science & Nutrition

WJEC

Level 3 DIPLOMA (2 Years)

STUDENTS WILL NEED

Students will need to achieve recommended entry requirements for the Professional Pathway, plus subject specific requirements of:

CERTIFICATE: L2 Hospitality and Catering or GCSE Food Preparation and Nutrition graded P2/4

DIPLOMA: L2 Hospitality and Catering or GCSE Food Preparation and Nutrition graded M2/5

This qualification allows students to develop their interest and enthusiasm for cooking; experimenting with flavours and catering for those with special dietary requirements.

Many employment opportunities within the field of food science and nutrition are available to students who take this course

STUDENTS WILL STUDY

Unit 1: Meeting Nutritional Needs of Specific Groups

Unit 2: Ensuring Food is Safe to Eat

Unit 3: Experimenting to Solve Food Production Problems

ASSESSMENT

The Level 3 Diploma in Food Science and Nutrition is assessed using a combination of internal and external assessment.

Unit 1: Meeting Nutritional Needs of Specific Groups.

This unit will be both internally and externally assessed.

Unit 1 is 50% of the final grade.

- 90 Minute Exam
- Coursework including a practical exam

Unit 2: Ensuring Food is Safe to Eat (25%)

- 8 hour timed, supervised assessment complete over 3 weeks.

Unit 3: Experimenting to Solve Food Production Problems (25%)

- Coursework with practical experiments

POTENTIAL SECTORS OF EMPLOYMENT

Health, Public Services and Care

Leisure, Travel and Tourism

Level 3 Vocational Courses

Performing Arts

Pearson Edexcel

BTEC NATIONAL EXTENDED CERTIFICATE (2 Years)

STUDENTS WILL NEED

Students will need to achieve recommended entry requirements for the Professional Pathway, plus subject specific requirements of:

Grade 4+/P2 in Drama, Music or Performing Arts

STUDENTS WILL STUDY

Three Mandatory Units:

- Investigating Practitioners Work
- Developing Skills and Techniques for Live Performance
- Group Performance Workshop

Plus one Optional Unit:

- Interpreting Classical Text for Performance:
- Acting Styles
- Developing Voice for Performance:
- Improvisation
- Movement for Performance
- Musical Theatre Techniques
- Variety Performance

ASSESSMENT

Students are assessed through a variety of internal and external assessment tasks that range from a supervised assessment to practical exploration and supporting coursework

POTENTIAL SECTORS OF EMPLOYMENT

Arts, Media and Publishing
Education and Training

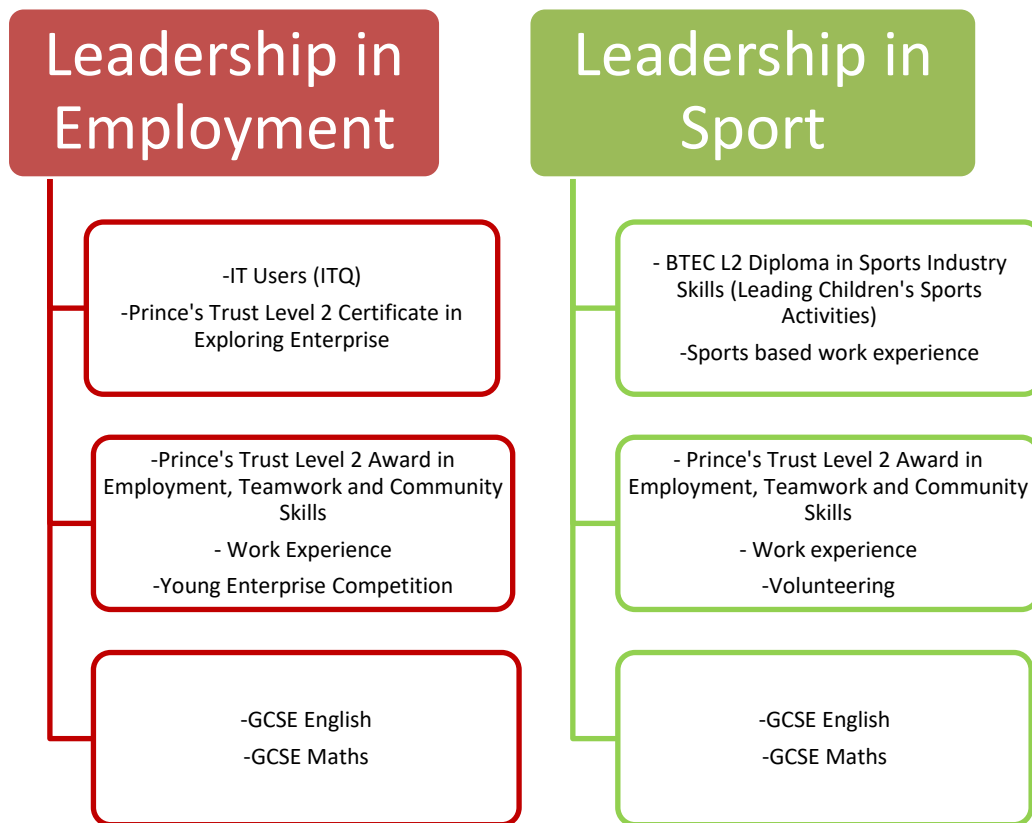
The Foundation Pathway – Level 2

The Foundation Pathway at St Mary's Sixth Form and Leadership Centre offers two distinct pathways relating to Employment and Sport that we believe will interest and motivate learners.

The primary aim of the programme is to develop our students into suitably qualified, well skilled individuals, who are ready for their next step into work, traineeships and/or apprenticeships or Level 3 study. The Foundation Pathway is a one year, full time Level 2 programme which will accredit learners with qualifications in English and Maths alongside additional qualifications and learning experiences related to their chosen sector.

The overview below shows each pathway and the learning experiences that students will experience throughout the year. In addition to substantive Level 2 qualifications related to their sector, all students will take part in additional work based learning opportunities.

Following this year of Level 2 study, successful learners would progress onto either Level 3 study at St Mary's or a traineeship or apprenticeship.



***Please note that some subjects may change from the original offer between time of printing and enrolment.*

Level 2 Course (Mandatory Subjects)

All students must continue to study Level 2/GCSE English and/or Maths as part of their Sixth Form learning pathway if they have not achieved a Grade 4

English Language

AQA

GCSE

This will be compulsory course for any student in the sixth form who has not achieved at least a Grade 4 in GCSE English Language.

COURSE DESCRIPTION and ASSESSMENT

Written Examination

Paper 1: Explorations in Creative Reading and Writing

Section A: Reading – One literature fiction text

Section B: Descriptive or narrative writing

Paper 2: Writers' Viewpoints and Perspectives

Section A: Reading – One non-fiction text and one literary non-fiction text that are linked

Section B: Writing – Writing to present a viewpoint

Teacher assessment

Spoken Language:

Presenting

Responding to questions and feedback

Use of standard English

Mathematics

Pearson Edexcel

GCSE

This will be a compulsory course for any student in the sixth form who has not achieved at least a Grade 4 in GCSE Maths.

COURSE DESCRIPTION and ASSESSMENT

Maths GCSE is a linear course assessed by three separate exams, a non-calculator paper and two calculator papers. Six strands of mathematics are studied. These are Number, Algebra, Ratio proportion and Rates of Change, Geometry and Measures, Probability, Statistics. There are two levels of study which are Higher and Foundation. The Higher tier examination grades range from 9 - 3 and the Foundation tier grades range from 5 - 1.

All students will be entered for the Foundation Tier.

Level 2 Courses

Exploring Enterprise

Level 2 Certificate
Prince's Trust

STUDENTS WILL NEED

Students will be expected to have one GCSE grade 4/P2 and be following the Foundation pathway.

STUDENTS WILL STUDY

Personal Progression
Marketing
Exploring Enterprise
Understanding Money
Develop a Marketing Strategy for an Enterprise
Developing an Enterprise

ASSESSMENT

Students submit a portfolio of evidence

→ Activities are internally set by the centre to meet the requirements detailed in the unit assessment criteria.

→ The learners are assessed internally at the centre by an Assessor whilst they engage in activities

→ The learner's evidence is collated into a portfolio, which is referenced using a unit Tracking Sheet

→ The centre undertakes internal quality assurance activities which includes sampling portfolios assessed by each Assessor

→ A further sample of portfolios is then externally verified by Prince's Trust Qualifications

POTENTIAL SECTORS OF EMPLOYMENT

Preparation for Life and Work
Business, Administration and Law

IT Users (ITQ)

BTEC Level 2 Certificate
Pearson Edexcel

STUDENTS WILL NEED

Students will be expected to have one GCSE grade 4/P2 and be following the Foundation pathway.

STUDENTS WILL STUDY

Students will study a range of units including:

- Improving Productivity Using IT
- Imaging Software
- Website software
- Presentation software

ASSESSMENT

The overall grade for each qualification is a 'pass'. The learner must achieve all the required units within the specified qualification structure.

To pass a unit the learner must:

- achieve all the specified learning outcomes
- satisfy all the assessment criteria by providing sufficient and valid evidence for each criterion
- show that the evidence is their own

POTENTIAL SECTORS OF EMPLOYMENT

Information and Communication Technology
Retail and Commercial Enterprise
Education and Training
Engineering and Manufacturing Technologies

Level 2 Courses

Sports Industry Skills (Leading Children's Sports Activities)

Pearson Edexcel
BTEC Level 2 Diploma

STUDENTS WILL NEED

Students will be expected to have one GCSE grade 4/P2 and be following the Foundation pathway.

STUDENTS WILL STUDY

Unit 1: Working in the Sport and Active Leisure Industry
Unit 2: Physical and Sports Education in School and Community settings
Unit 3: Sports Leadership
Unit 4: Working as a Sports Leader

ASSESSMENT

Internal assessment and coursework

POTENTIAL SECTORS OF EMPLOYMENT

Leisure, Training and Tourism
Preparation for Life and Work
Education and Training

Employment, Teamwork and Community

Level 2 Award
Prince's Trust

STUDENTS WILL NEED

Students will be expected to have one GCSE grade 4/P2 and be following the Foundation pathway.

STUDENTS WILL STUDY

Career Planning
Community Project
Planning for Personal Development
Presentation Skills
Supporting Other People in the Community
Teamwork Skills
Work Experience

ASSESSMENT

Students submit a portfolio of evidence
→ Activities are internally set by the centre to meet the requirements detailed in the unit assessment criteria.
→ The learners are assessed internally at the centre by an Assessor whilst they engage in activities
→ The learner's evidence is collated into a portfolio, which is referenced using a unit Tracking Sheet
→ The centre undertakes internal quality assurance activities which includes sampling portfolios assessed by each Assessor
→ A further sample of portfolios is then externally verified by Prince's Trust Qualifications

POTENTIAL SECTORS OF EMPLOYMENT

Preparation for Life and Work
Business, Administration and Law

Enrichment Opportunities

As well as offering the broad range of examination courses, an important part of the Sixth Form provision is the enrichment programme that supports personal development. Students are expected to take part in enrichment programmes alongside their examinations courses because they complement each other and will allow students to claim high quality experiences and achievements as part of their university and work place applications. These opportunities are particularly aimed at developing leadership and communication skills and to develop their confidence and cultural experiences.

A large number of visits, social and cultural guest speakers contribute to the enrichment programme, some of which are outlined below.

Extended Project Qualification (EPQ)

The Extended Project provides an opportunity for students to extend their abilities beyond the A-Level subjects that they are studying and enables them to stand out from others applying for university places and in future career opportunities. It is the equivalent to 'half' an A Level and carries UCAS points.

The Extended Project Qualification is a single project where students work independently in one of their specialist areas (ie, complementing an A Level subject) or in an area of their own interest. The EPQ requires students to produce an extended piece of writing to show their development of their chosen area of interest, present to a non-specialist audience and to show how their project has developed during the time of the study. Students have dedicated curriculum time with an EPQ tutor who will guide their work and results for the EPQ at St Mary's are very high.

This amazing opportunity will provide students with extra UCAS points as a free-standing project based qualification. The programme is highly valued by universities and employers because it allows students to demonstrate their ability to work independently, research and deliver aspects of their own interest showing ingenuity and a wider interest beyond the scope of A Level subject specifications.

Some examples of EPQ 5000 word projects presented by St Mary's students are as follows:

- Teenage boys living with eating disorders, who or what is to blame?
- The reasons behind racial tensions between the police and young black men in the USA – Texas
- What makes a psychopath. Genes or Society?
- What impact has social media had on depression amongst teenagers in the UK.
- The negative impact of Brexit posed upon the FDI in the UK and the UKs strategies in order to overcome these threats
- To what extent did the Italian Renaissance influence today's high street fashion?

Leadership Development Opportunities

Great leadership is characterised by key skills and qualities and our Sixth Form encourages all students to develop these characteristics through academic study and participation in enrichment activities that will encourage all to develop into leaders of the future.

Sixth Form students have a wide range of opportunities to get involved in developing their leadership skills and this includes working with younger students, organising sports and extra-curricular activities, leading Student Voice, being a Prefect, working with staff to deliver special school events and through being tutors and mentors for younger students. Leadership accreditations are available as part of our sports pathways as well as other courses such as public speaking certificates that validate leadership skills.

Volunteering

Student volunteering is encouraged in a number of contexts within and outside the school environment. Students can apply to become Mentors for younger students, join the SLI team or join the prefect team to support the work of the school, contributing to whole school events and acting as positive role models for younger students.



St Mary's has an excellent reputation for working to support the local community. All Sixth Form students are encouraged to volunteer to work in the community, for example with local primary schools, residential homes for the elderly or church organisations.

All students are encouraged to participate in community focused projects as they become available locally or through the NCS (National Citizen Service) which is highly regarded by universities and frequently referenced as a requirement/preference in applications.

University Preparation

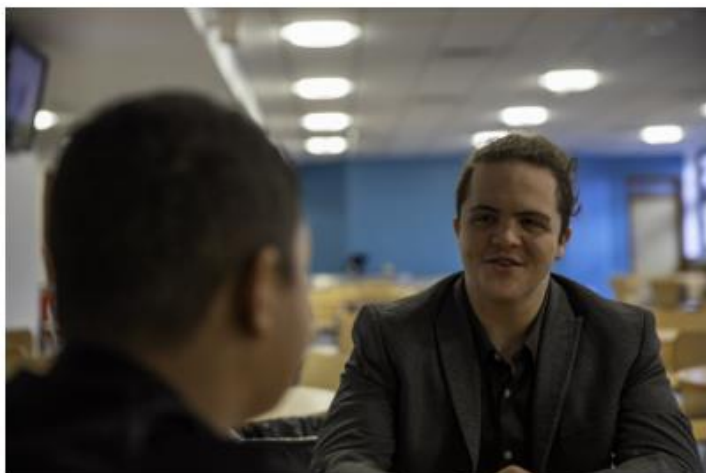
When thinking about raising the aspiration of our students and creating vision, we encourage all students to prepare well for university entrance. Those who have the aspiration for Oxbridge entrance are invited to attend coaching and preparation experiences. All who want to access the university route are able to attend a number of University visits to experience the life and culture to grow a vision for future life.

Residential and day visit experiences enable our students to make informed decisions about this huge step in their lives, to understand both the courses and academic study but also the lives within the university campus. They will see living quarters and social life.

Students facing entrance tests and the heightened interview process for Russell group and Oxbridge will receive specialist tutoring from staff who have experience of this process.

Please see the School website for more information

Careers Education, Advice and Guidance



Supporting Next Steps

We are delighted to present an exciting glimpse into the outstanding careers education, advice and guidance opportunities available at St Mary's Sixth Form. We are committed to empowering our students to shape their futures with confidence and ambition. As the students consider their academic journey into the Sixth Form, we want to share the exceptional resources and support that awaits them.

We are dedicated to the success of our students and encourage the students to join the Sixth Form and embark on a journey of academic achievement and personal growth, all the while, receiving the careers education and guidance that will empower them to make their mark on the world.

One-to-One Careers Information, Advice, and Guidance

Upon joining the Sixth Form, all students will have access to personalised, one-to-one careers information, advice, and guidance meetings with the career's adviser, who will work closely with each student and the Sixth Form team to chart a path that aligns with the students' unique goals and aspirations.

University Taster Days

We understand that higher education is a key avenue for many of the students and that is why we provide the opportunity for the students to take part in university taster days, allowing them to experience campus life, explore academic programmes and gain insights into their potential future pathway.

Dedicated Apprenticeship Support

Through the specialised apprenticeship support group, students looking to move into training and apprenticeships can explore the essential skills required, such as the crafting of effective cover letters, CV writing and navigating the application process. With our guidance, the students will be well-prepared to secure the apprenticeship of their dreams.

Unifrog - The Complete Careers Platform

At St Mary's we are proud to provide access to Unifrog, a powerful career exploration platform. Unifrog enables the students to thoroughly research post-18 options, including university courses and apprenticeships, making well-informed decisions about their future.

Careers Personal Development Programme

Our dedicated careers personal development programme is designed to help the students understand how their skills and interests can connect to future career pathways; a crucial step in ensuring that they embark on a fulfilling journey beyond Year 13.

Building Key Employability Skills

We believe that practical experiences are integral to success and as part of our commitment to building employability skills, all students will have the opportunity to take part in a mock interview. This interview will equip the students with the confidence and knowledge to excel in real-life job interviews.

Fortnightly Careers Bulletin

Our students receive a comprehensive career bulletin every two weeks, packed with a wealth of opportunities and apprenticeship vacancies. This helps the students to stay informed about the latest openings and make informed decisions about their post-secondary education or career choices.

Support for All Pathways

No matter what the pathway, rest assured that we will support the students every step of the way. Whether they are aiming for university, apprenticeships, or another endeavour, we are here to guide them toward their goals.

Launched in September 2016, we are now looking to recruit for our sixth cohort of student athletes for September 2024

In partnership with ASE, our ASE Football Academy will give the students the opportunity to follow a personalised programme of academic study whilst receiving specialist football coaching and personal fitness training.

'Student Athletes' will be able to pursue their passion for football whilst studying. They will have access to personalised player technique, skill and fitness development programmes throughout the academic year.

The programme will be led by professional Academy coaches. Students will have opportunities to train at an elite standard, play in regular competitions at local and national level to gain additional coaching and refereeing qualifications.



ASE Football Academy Seasonal Standings;

2017 - 18 ECFA Men's Invitation Category 3: Winners
2018 - 19 ECFA Men's Invitation Category 3: 2nd Place
2019 - 20 ECFA Men's Championship Invitation B: 2nd Place
2021-22 ECFA Mens Championship B: 2nd Place finish
2022-2023 ECFA Mens Championship B: 3rd Place Finish

ASE Football Academy player signed to clubs;

June 2017: 2 Players signed
June 2018: 6 Players signed (Including 2 international debuts)
June 2019 : 4 Players signed
2021-22 Season: 3 Players signed to semi professional football
2022-23: 2 players signed to semi professional football (including 1 international)

FULL TIME PROGRAMME

The St Mary's ASE Football Academy programme provides students with professional academy standard coaching in a school environment.

This includes up to 9 hours of team training per week: study seminars, game and individual performance analysis, sports specific athlete mentoring, individual and small group coaching sessions.

COMPETITIVE OPPORTUNITIES

Academy players will have regular competitive opportunities in the AOC Sport Men's Championship.

CAREER OPPORTUNITIES

Academy players will have the potential to progress to a career in football as a player or in other capacities e.g. coaching. Academy players can also explore opportunities to study at university here in the UK or abroad or engage in an apprenticeship or in employment in the sports industry.

In the last five seasons, 13 players have joined semi-professional teams playing either first team or U23's, two have gained trials with professional academies and three have made international debuts for their respective countries.

POST 16 FOOTBALL ACADEMY HEAD COACH

Jhovan Bruce de Rouche

- ASE U9 – U18 Lead Coach
- Current Premier League Academy Coach

"The regular training and match opportunities have really improved my fitness and technical ability"

"I would like to thank Jhovan for helping me get signed and I would like to thank the rest of the St Mary's teachers for helping me achieve my academic potential."



The Aspire Business & Enterprise Academy aims are to support students who wish to progress into a career focused on or linked to the business industry at the highest level; helping to develop skills for life.

The mission of the Aspire Business & Enterprise Academy is to build the business leaders of the future and as a result, students are provided with a wealth of enrichment opportunities and national programmes that support the academic and vocational opportunities available within the curriculum pathways

Within the Aspire Business and Enterprise Academy, the Opportunities Portfolio provides students with a range of additional courses, qualifications and enrichment. Students gain valuable transferable skills that will support their next steps whether it this is university, apprenticeship or employment. These opportunities help our students to stand out on any their applications they submit, providing a competitive edge in an ever-increasing competitive world.

Young Enterprise



Each year the Aspire academy students participate in the Young Enterprise Company Programme, which runs between September and April. Year 12 students create their own small business where they identify their roles, start the business, create their products/services, run a marketing campaign and manage the finances.

Students attend a variety of events, including the Dickensian Evening in Ware, selling their products, marketing their team and engaging with members of the general public, all the while building their confidence and allowing them to gain key business experience. The programme culminates in a live final where the team present their product, progress and journey to a large audience. Since the Academy began, the Aspire Academy students have received numerous awards, including,

- Innovation Special Recognition for Teamwork,
- Special Recognition for Trade Stand
- Outstanding Contribution

Emergency First Aid at Work

The Emergency First Aid at Work qualification is available for students aged 16+ to complete through an intensive one-day training course.

We now have over **60 students** qualified which is amazing and all of these students can add this achievement to their CV.



"I feel confident that I would now be able to potentially save someone's life"

Year 12 Student (2022)

Sign Language

Opportunities for students and staff to work together to complete a course in British Sign Language have proven popular and through the implementation of this opportunity, students develop an additional skill that will enable them to communicate and contribute to an inclusive community.



Opportunities Portfolio

Other opportunities available to students include:

- Mental Health First Aid qualification
- Fundamentals of Digital Marketing qualification
- Report writing course
- Food Safety & Hygiene Level 2 qualification
- Health & Safety qualifications
- IT Systems training
- Project Management training
- Financial Times Student Advocates programme
- Student Enterprise
- Business and Enterprise Challenges

NOTES

St Mary's CE High School

St Mary's is an 11-19 co-educational comprehensive school
'We believe everyone is equal; everyone deserves the best'

St Mary's CE High School, Lieutenant Ellis Way, Cheshunt, Herts, EN7 5FB

Telephone: 01992 629124/5

Fax: 01992 642918

Website: www.st-maryshigh.herts.sch.uk email: admin@st-maryshigh.herts.sch.uk

Twitter: @SMHSch and @SMHSixth

Facebook: stmaryscehighschool

Head Teacher: Nicholas Simms

Chair of Governors: Sarah Willis

