



AI and Assessments: **A quick guide for students**



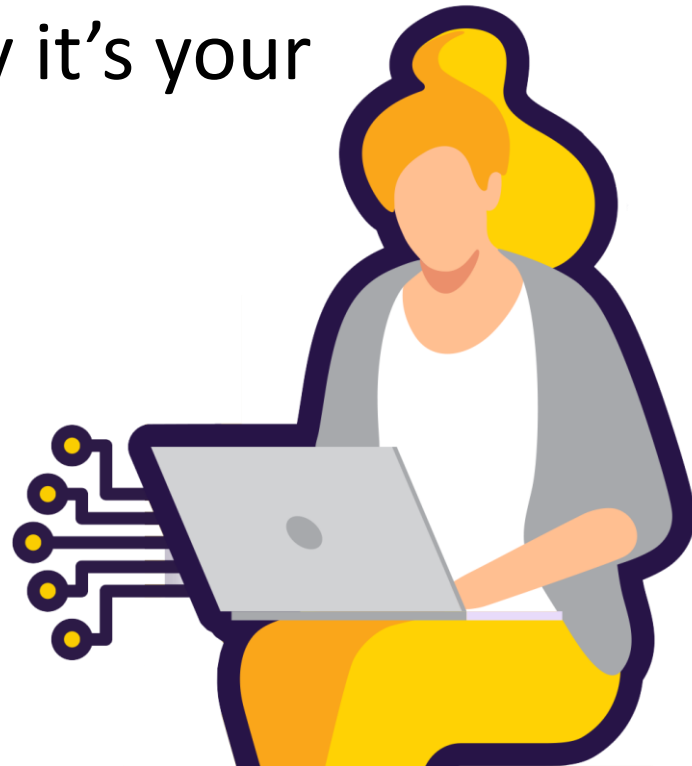
What is AI?

- AI stands for artificial intelligence and using it is like having a computer that thinks
- AI tools like ChatGPT or Snapchat My AI can write text, make art and create music by learning from data from the internet, but watch out – they can also make things up and be biased



How can AI be misused in assessments?

AI misuse is when you take something made using AI and say it's your own work.



**THIS IS
CHEATING!**



How do I make sure I don't misuse AI?

- 1 Know the rules
- 2 Reference reference reference!
- 3 Declare it's all your own work



1

Know the rules!

- You're not allowed to use AI tools when you're in an exam
- Your teachers will tell you if you're allowed to use AI tools when doing your coursework – the rules will depend on your qualification
- Even if you're allowed to use AI tools, you can't get marks for content just produced by AI – your marks come from showing your own understanding and producing your own work



2

Reference reference reference!

If you're allowed to use AI tools, you must reference them clearly

- Name the AI tool you used
- Add the date you generated the content
- Explain how you used it
- Save a screenshot of the questions you asked and the answers you got



3

Declare it's all your own work

- When you hand in your assessment, you have to sign a declaration
- Anything without a reference must be all your own work
- If you've used an AI tool, don't sign the declaration until you're sure you've added all the references



What happens if I misuse AI?

If you've misused AI, you could lose your marks for the assessment – you could even be disqualified from the subject.

DON'T RISK IT!





REMEMBER

Misusing AI is cheating!

Know the rules

Talk to your teachers

Reference clearly

